



Midwest Kidney Network



June 2025 Transplant E-Newsletter from Network 11

NEW! Transplant Editor EQRS Quick Start Guide



We are excited to announce there is an updated [Transplant Editor Quick Start Guide](#) available for your reference. This revised step-by-step guide is meant to help Transplant Editors with their EQRS tasks such as managing patient records, admitting and discharging patients, and completing CMS forms.

Medicare and Citizenship Status

When you are admitting a transplant patient in EQRS, please ensure you always enter the patient's Medicare and citizenship status during the admission process. While these are not technically mandatory fields for the admission process, these two fields are required on the annual CMS 2744 and additional data reconciliation will be required if missing at that time.



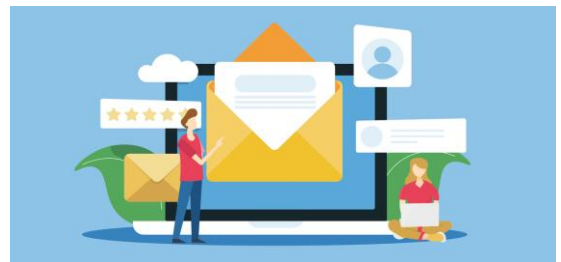
Patient Admissions and Discharges



Per CMS, all kidney transplant admissions and discharges must be reported in EQRS. Please note, multi-organ kidney transplants are also reported, such as a heart-kidney or pancreas-kidney transplants. If a patient passes away or a kidney transplant fails, those discharges must be reported in EQRS within 5 days, so the dialysis facility can admit the patient, if applicable.

Stay in the Loop with Us!

We try hard to keep our transplant staff contact lists as up to date as possible, if you would like to be added to our Network's mailing list (or to be removed), please let us know by replying to this email. We enjoy hearing from you and if you have suggestions on how we can improve communication for transplant staff from the Network, please let us know!



EQRS Training & Support



We are your first line of support for EQRS and CMS forms, and we welcome your questions or concerns! We also offer 1:1 EQRS training/onboarding for new staff, if you need a refresher, or if you are a manager and need an EQRS program overview. You can always reach us at Midwest Kidney Network:

- **Alli Bailey, Data Manager, (651) 644-2911**
- **Aletha Duncan, Health Information Specialist, (651) 644-5839**